



Extension

UNIVERSITY OF WISCONSIN-MADISON
TAYLOR COUNTY

Taylor County January/February 2022 Highlight Report

Extension Mission: *We teach, learn, lead, and serve, connecting the University of Wisconsin, and engaging with them in transforming lives and communities.*

Agriculture

PROVIDING RESEARCH-BASED LIVESTOCK AND FARM BUSINESS MANAGEMENT INFORMATION, RESOURCES AND DECISION-MAKING TOOLS TO FARMERS AND AGRIBUSINESSES.

SANDY STUTTGEN, EDUCATOR



Sandy Stuttgen

- ***During January and February 2022, Agriculture Educator Sandy Stuttgen helped county and area residents by providing requested educational content or resources.*** Examples of information she shared include:
 - problem solving potential residential well-water contamination from land spreading of manure
 - helping a local butcher shop access grants funds to expand their meat processing capacity
 - discussing and forwarding crop land and pasture rent resources to set rental rates and draft a lease
 - discussing disaster relief following storm damage in Taylor County and how to obtain potential funds through the disaster relief program
 - accessing COVID relief funds for a livestock producer in Taylor County
 - pricing feed inventory and cow value as a Taylor County farmer transfers ownership of his dairy to his son
 - managing a beef producer's pasture to mitigate exposure to intestinal worms
- ***River Country Co-op is a member-owned agricultural and fuel cooperative serving the North Central Wisconsin trade area. The Dairy Producer Conference shared ideas and thoughts that will impact farms for the rest of 2022.*** Sandy and her colleague were invited presenters for the February 3, 2022, Dairy Production Conference hosted by River Country Co-Op in Eau Claire, WI. During one of the three hour-long breakout sessions, they discussed the importance of beef sire selection to compliment dairy dam performance and the importance of neonatal calf care for lifelong dairy-beef animal performance



and health. Approximately 50 dairy producers (including those from Taylor, Clark, and Marathon counties) attended the conference and eleven participated in Sandy’s breakout session. Seven of the 11 participants completing the post-presentation evaluation indicated they improved their understanding of dairy-beef calf neonatal protocols after hearing her presentation (52% strongly improved their understanding, 33% moderately or somewhat improved their understanding). Sandy will be presenting some of her content during the upcoming Dairy-Beef statewide virtual ZOOM meeting scheduled for March 8, 2022.

“
52% improved their understanding of dairy-beef calf neonatal protocols after listening to Sandy’s presentation.
”
(Dairy Production participant)

Wisconsin 4-H



TAYLOR COUNTY 4-H HAS OVER 200 YOUTH AND ADULTS WORKING IN PARTNERSHIP TO PROVIDE YOUTH OPPORTUNITIES TO LEARN LEADERSHIP AND LIFE SKILLS.

JULIE DIEPENBROCK, EDUCATOR



Julie Diepenbrock

- **Club Activities**

4-H club meetings where youth made gift bags, learned about the sport of curling, and hosted bowling events. The goal of this effort was to provide youth the opportunity to learn a new skill and develop a sense of belonging. Taylor County 4-H Clubs and groups have been busy this Winter with traditional meetings and activities. A few examples include: Poplar Grove 4-H Club decorated and assembled gift bags to be distributed to Meals on Wheels recipients in the Gilman area. Liberty 4-H Club invited other Taylor County 4-H Clubs to join them for an educational program on the sport of curling. They then had a chance to learn how to curl and some time to practice. Youth from Liberty, Little Farmers, and Little Whispers 4-H Clubs attended this session and had a great time learning about the sport and a new skill. Little Whispers 4-H Club invited other Taylor County 4-H Clubs to join them for an afternoon of bowling. And on another day at the end of their meeting created Valentine cards to give to residents of a local nursing home. Countrysiders 4-H Club hosted their own afternoon of bowling as well. Diamond Lakers 4-Hers decided at a recent meeting to honor recently deceased 4-H leader, Virginia Ustianowski, by starting and maintaining a Little Library in the town of Lublin. Thrifty-Go-Getters is in the process of designing new 4-H t-shirts and are planning their next meeting to be at



Forest Springs. Each of these opportunities provides learning opportunities and helps create a sense of belonging.



- **Partnership**

A collaborative effort between UW Extension 4-H and Huey's Hideaway Children's Museum where youth learned photography skills that provided them with social connection and hands-on learning opportunities. Huey's Hideaway Children's Museum often offers programs for youth on days when Medford public schools are not in session. Taylor County 4-H partnered with Huey's Hideaway to provide some hands-on photography activities for youth in January. Youth had an opportunity to learn some basic photography skills then to put their learning into practice by taking a number of pictures and then sharing them with the other youth and me. In February, I am planning to take the Lego Robotics to let the youth learn and try them. I am also planning a session in April with Foldscofes. We will also be partnering with Huey's this summer by providing a program at each of their weekly Day Camps. These activities allow youth to use their head and hands to participate in learning activities that correspond with 4-H projects.

- **Upcoming 4-H Project Meetings**

A series of project meetings where 4-H members can learn about projects they are enrolled in to help develop their skills. While many of our Taylor County 4-H projects have project leaders that help the youth learn, we have several projects that do not have a designated project leader. This Spring we are working with some local community members to provide learning opportunities in 3 of our projects. Running Tree Sugarhouse is providing a 2-part series for youth in the Maple Syrup project to learn more about maple syruping. The first session will focus on learning to identify maple trees and the ideal season and temperatures in order to set up tapping and tree lines. The second session will focus on collection and the process of boiling the maple sap into syrup. In April, those who are enrolled in the Cake Decorating project are invited to learn the basics of cake decorating and decorate a mini cake to enjoy and take home. May will give youth in the Woodworking project an opportunity to work with Community Development to help rebuild the community garden 3x8 beds.



Community Development

PROVIDES EDUCATIONAL PROGRAMMING TO ASSIST LEADERS, COMMUNITIES, AND ORGANIZATIONS REALIZE THEIR FULLEST POTENTIAL.



Michelle Grimm

MICHELLE GRIMM, EDUCATOR

- ***Taylor County Tourism Committee – discussions around ARPA Grant***
Facilitated conversations with the county tourism committee where they considered alternatives and examined data that will inform decisions related to how they allocate resources and use potential American Rescue Plan Act grant funding.
- ***StrongBodies -- A series of virtual strength training sessions for older adults where they improve strength, balance, and flexibility, so they can stay healthy and socially connected.***
Winter in-person classes (4) and on-line classes are underway. Spring classes will continue to run in the same manner come March 14th.
- ***Community Gardens – an opportunity to grow fresh produce at low costs and easy maintenance offered to Medford area citizens.***
Working with local lumberyards on estimates for refurbishing 25 identified garden beds. Michelle and 4-H members will collaboratively rebuild the beds the beginning of May. This will also serve as a “Woodworking” project for those 4-H members that are currently enrolled. Funds for this hands on project are coming from the local Master Gardeners account.
- ***Clean Sweep – Taylor County Solid Waste collections of household, ag and hazardous materials.***
Working with local contact to identify tasks for first Clean Sweep date – May 7th. Planning for the event will continue up to the day it is held.



Primary Partnering Organizations

- Huey's Hideaway
- Northcentral WI Cattleman's Association
- Taylor County 4-H Federation
- Medford Farmer's Market
- Taylor County Tourism
- Recycling Authority
- WI Beef Council
- DATCP
- WI Animal Healthy ER Mgmt Working Group
- Athens School District
- Farm WI Discovery Center
- The Lord's Cupboard Food Pantry
- Lutheran Social Services
- Indianhead Community Action Agency
- Head Start
- Prentice School District
- Family Forum Head Start
- Indianhead Community Action Agency
 - -Medford Food Pantry
- Gilman Elementary School
- Frances L Simek Memorial Library – Medford
- Wesley Children's Hospital
- PBS Wisconsin
- Market Animal Show & Sale
- Taylor County Fair Board
- Stetsonville Elementary School
- Medford Elementary School

Julie Diepenbrock: *4-H Educator (Shared with Price County)*

Open: *FoodWise Nutrition Coordinator (Multi-county) -currently hiring; & FoodWise Nutrition Educator (Taylor County)*

Michelle Grimm: *Community Development Educator*

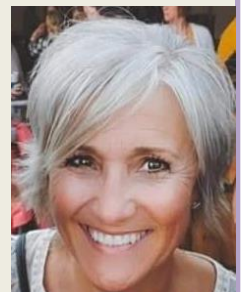
Sandra Stuttgen: *Agriculture Educator*

Kelly Phillips: *Program Assistant*

Art Lersch: *Area Extension Director, Langlade, Lincoln, Price, Taylor (715-218-5360)*

<https://taylor.extension.wisc.edu/>

Office: 715-748-3327



Kelly Phillips